



# SETTLE COLLEGE

*'Be the best you can be'*



## Sixth Form at Settle College

### Prospectus 2025



## Welcome to Sixth Form at Settle College

At Settle College, our goal is simple: we want every student to be the best they can be. We achieve this by offering a diverse and exciting curriculum tailored to our community. Our dedicated teachers ensure outstanding progress and achievement while fostering confidence, independence, and resilience through our Settle College Diploma. We prioritise the well-being and development of both students and staff. Our aim is to empower students to overcome challenges, acquire lifelong learning skills and reach their dreams, making Settle College a vital part of our community.

Our Sixth Form is inclusive; we have a tradition of academic excellence, but we also aim to develop our students in a more holistic manner; developing them for whatever future endeavours they may pursue. The majority of students leaving Settle College attend University, with others pursuing apprenticeships or taking a gap year before embarking on their next steps. We offer a wide range of courses, providing a mix of traditional A-level qualifications with vocational options alongside. Students are able to select a combination of these to suit them, with advice from the Sixth Form team on how these subject combinations can open options for them in the future. The opportunity to choose your own subjects is exciting, setting the course for your future.

We aim for Sixth Form at Settle College to be a relaxed, but purposeful environment. Achievement only comes through graft and commitment and we aim to support our students in doing their very best. Our students work hard in their chosen subjects, but there are also lots of other opportunities available beyond this. This prospectus is designed to signpost you towards further information about life in Sixth Form at Settle College and we would encourage you to engage with our open evening (17<sup>th</sup> October) or visit the Sixth Form team to get a real flavour of life here and to speak with our students.

Thank you for taking the time to consider the Sixth Form at Settle College and we hope to see you in the near future. Should you have any questions about Sixth Form, or the courses offered, please do get in touch.

Mr Thomas Bayram  
(Head of Sixth Form)



## Why Settle College for Sixth Form?

Sixth Form at Settle College has a focus on three key values; that Sixth Form students should be role models, that the opportunity to develop and learn is amazing and that all students should be involved in areas outside of their subjects.

By encouraging all Sixth Form students to embrace their position as role models, we encourage students to:

- embrace their ability to inspire younger students and their teachers
- hold clear values
- demonstrate a commitment to their community
- show selflessness and acceptance of others
- work on their ability to overcome obstacles

Part of their positive attitude and position as role models is encompassed in the **Sixth Form dress code**. This is a simple values system and helps to prepare students for life after school:

Students are free to choose what their wear, remembering that Sixth Form at Settle College is a professional workplace, where impressionable children also attend. This choice of appearance should reflect their positive attitude towards learning and should not challenge a child's ability to objectify, negatively judge or discriminate.



## Personal Development

As part of our aim to develop and prepare our students for the opportunities available after Settle College, all students take part in a *personal development* programme. This programme is unique to Settle College and works on developing a variety of skills that are applicable to a wide range of future pursuits, as well as aiming to broaden students' horizons.

From the start of Year 12, students are encouraged and guided in thinking and reading beyond their studied courses. All students are exposed to an eclectic mix of topics, through our "An Introduction to..." lessons, which have included *Incarceration*, *Britpop's effect on British culture & politics*, *Rewilding* and *Capoeria*. All Sixth Form students then complete a course studying and/or researching an area outside of their curriculum choices, with support from the Sixth Form team; this can include an Extended Project Qualification (EPQ), Teaching English as a Foreign Language, the potential to complete a level 3 Sports Leadership qualification, options from Massive Open Online Courses and more.



## Sixth Form at Settle College – 2024 Destinations

Via the *Personal Development* programme, all students work on applications with support from the Sixth Form team. The majority of our students apply to university, with 100% receiving an offer from their first-choice place in 2024.

Whilst we do not focus only on academic achievement, our students do perform well, with an overall A\*-C rate of 74%; our Art, Biology, Business, Chemistry, English Language, IT, Psychology and Spanish students all performed above national average for A\*-C (or equivalent). 100% Within Applied Science all students achieved a Merit or above and more than half of students taking Business and/or IT scored Distinction or above.



Students participate in our careers programme, as well as completing a work experience placement in Year 12 and we actively engage with local employers. Each year we have students joining local apprenticeship programmes from Sixth Form and we ensure that all students are aware of the variety of opportunities that are available after Settle College through guest speakers and visits.

## The Sixth Form Centre

Students have use of the designated Sixth Form Centre within Settle College. This includes spaces for quiet study, group work, computers, a kitchen and a common room.

As young adults and role models, the students take responsibility for these spaces. The quiet spaces are for scholarly activities, encouraging students to remember that the opportunity to learn is amazing.



The use of a designated common room and kitchen is for breaks and down-time, as students help design their timetables outside of contact lesson time, to ensure there is structure to their week and help them use independent study periods effectively.

## Subject information

<b>Subject</b>	<b>Page</b>
Applied Science	8
Art	10
Biology	8
Business Studies	12
Chemistry	9
Computer Science	12
Drama	11
English Language	14
English Literature	14
French	16
Geography	15
History	15
Information Technology	12
Maths	13
Music	11
Photography	10
Physical Education	17
Physics	9
Product Design	17
Psychology	13
Spanish	16

## Applied Science (CTEC)

A more general look at KS5 Science than the A-level options, including fundamentals of Science, laboratory techniques and hazards, microbiology and product testing.

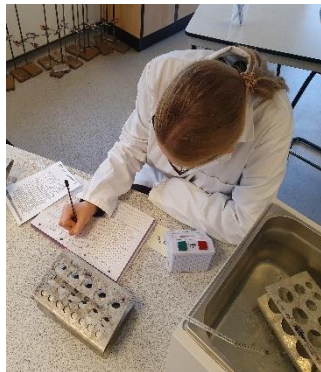
Assessed via coursework and examinations (OCR).

Entry requirements: 5 GCSEs at grade 4 or above, which must include GCSE Combined Science (Grade 4-5)



More information:

<https://www.settlecollege.org.uk/home/curriculum-2/departments/science/>



## Biology (A-level)

Following the Salters-Nuffield A-level Biology course, covering topics including lifestyle, health and risk, genes and genomes, biodiversity and immunity, infection and forensics.

Assessed via examinations in Year 13 (Edexcel).

Entry requirements: Grade 6 Separate Biology and Chemistry **or** 6-6 Combined Science. Grade 6 Maths and grade 5 English.



More information:

<https://www.settlecollege.org.uk/home/curriculum-2/departments/science/>





## Chemistry (A-level)

This course expands on the Chemistry work done in GCSE Science, but also introduces new ideas, including more advanced practical work, fundamentals, organic and inorganic Chemistry.

Assessed via examinations (OCR).

Entry requirements: Grade 6 Separate Chemistry and Grade 6 in Biology or Physics **or** 6-6 Combined Science. Grade 6 Maths.



More information:

<https://www.settlecollege.org.uk/home/curriculum-2/departments/science/>



## Physics (A-level)

A study of the very large to the very small, covering particle Physics, radiation, waves, fields and more. A mixture of practical and theoretical scholarship.

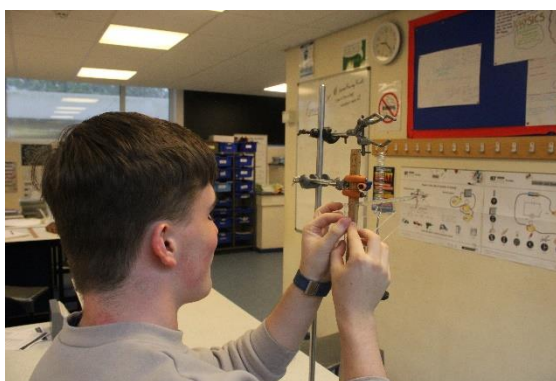
Assessed via examinations (AQA).

Entry requirements: GCSE Combined Science (Grade 6-6 or above) **or** separate Physics at grade 6. Plus Maths at grade 6 or above.



More information:

<https://www.settlecollege.org.uk/home/curriculum-2/departments/science/>



## Art (A-level)

A broad introduction to a variety of areas, including workshop sessions and developing problem-solving skills. Designed to challenge students to become independent thinkers and understand different elements of Art.

Assessed via coursework/portfolio and examination (Eduqas).

Entry requirements: 5 GCSEs at 5 or above, including Art at grade 6 or above.



More information:

<https://www.settlecollege.org.uk/home/curriculum-2/departments/creative-arts/art/>



## Photography (A-level)

Exploring different techniques, developing creativity and gaining problem-solving skills. Turning images from being flat to 3D and even digital. Including computer editing techniques, independent work skills as well as developing a personal response to a theme.

Assessed via portfolio of practical work and examination.



More information:

<https://www.settlecollege.org.uk/home/curriculum-2/departments/creative-arts/art/>



## Drama (A-level or BTEC)

Drama and Theatre is for actors, dancers or drama technicians who wish to further their skills in their chosen area. The course is performance based, rather than theoretical with an accompanying written portfolio.

Entry requirements: 5 GCSEs at grade 5 or above, to include English GCSE and Drama/



More information:

<https://www.settlecollege.org.uk/home/curriculum-2/departments/creative-arts/drama/>

## Music (A-level)

The curriculum for music is based on three intertwined disciplines: performing, composing and appraising and we support all students in their development these skills as musicians throughout the curriculum.

Entry requirements: Grade 5 standard on chosen instrument and GCSE Music grade 5 or above.



More information:

<https://www.settlecollege.org.uk/home/curriculum-2/departments/creative-arts/music/>

## Business Studies (CTEC)

This course really provides a close look at how business work. By working closely with local business such as Skipton Building Society, Piccalilly, Angus Fire, students are able to see for themselves the challenges and opportunities that businesses face.

Assessed via coursework and examinations (OCR)

Entry requirements: 5 GCSEs at grade 5 or above.



More information:

<https://www.settlecollege.org.uk/home/curriculum-2/departments/business-studies/>

## Information Technology (CTEC)

Covering a mix of fundamentals, product development, application design and web design, this course allows students to discover the workings behind I.T. systems, as well as developing a range of skills.

Assessed via coursework and examinations (OCR).

Entry requirements: Grade 4 or above in English or Maths. Grade 5 or above in Computing or an IT qualification is preferred but not conditional.

## Computer Science (A-level)

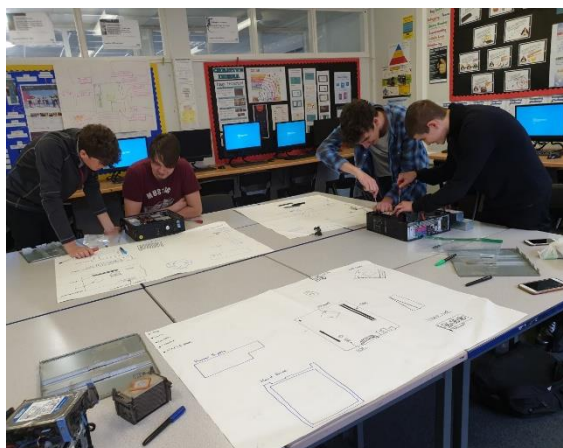
A Level Computer Science is where you'll explore the principles driving the digital world. This course covers programming, algorithms, and computer systems, while developing critical problem-solving skills. You'll also examine data representation and the ethical implications of technology. Join us to build a strong foundation in computer science and prepare for future studies or a career in tech!

Assessed via coursework and examinations (AQA).

Entry requirements: Grade 6 or above in English or Maths. Grade 6 or above in Computing is preferred but not conditional.

Further information on IT and Computer Science:

<https://www.settlecollege.org.uk/home/curriculum-2/departments/computing-and-it/>



## Psychology (A-level)

Psychology is the scientific study of the human mind and behaviour. It is a stimulating, engaging and challenging course that will provide students with an invaluable insight into human behaviour.

Assessed via examinations (AQA).

Entry requirements: 5 GCSEs at grade 5, including grade 6 or above in English Language or Science.



More information:

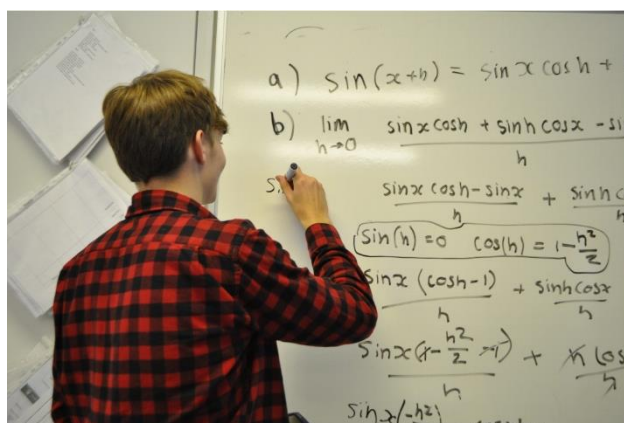
<https://www.settlecollege.org.uk/home/curriculum-2/departments/psychology/>

## Maths (A-level)

Maths at Settle College equally challenges and inspires. It's a great way of improving problem solving skills, as well as resilience. Covering a range of areas, including geometry, trigonometry, statistics and mechanics.

Assessed via examinations (AQA).

Entry requirements: Grade 6 Maths GCSE.



More information:

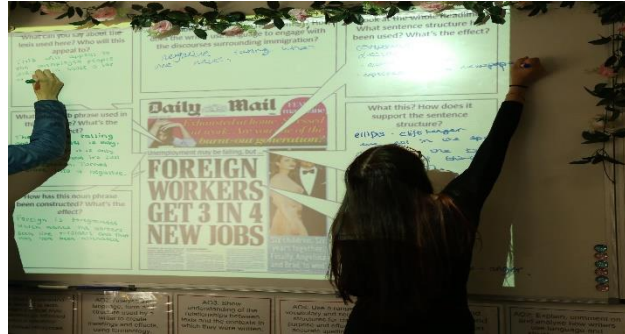
<https://www.settlecollege.org.uk/home/curriculum-2/departments/math/>

## English Language (A-level)

Studying the involvement of English language in society, diversity and change and including an investigation and research into language in action. Introducing students to language study, exploring textual variety and children's language development.

Assessed via coursework and examinations (AQA).

Entry requirements: 5 GCSEs, including grades 6 or above in English Language and Literature.



More information:

<https://www.settlecollege.org.uk/home/curriculum-2/departments/english/>

## English Literature (A-level)

Looking at literary genres (aspects of tragedy or comedy) and literary theory. Including a study of a Shakespeare play, a drama text and further writing, including crime writing or political/social protest writing.

Assessed via coursework and examinations (AQA).

Entry requirements: 5 GCSEs, including grades 6 or above in English Language and Literature.



More information:

<https://www.settlecollege.org.uk/home/curriculum-2/departments/english/>

## Geography (A-level)

Studying a range of topics including the in-depth study of coasts, globalisation, superpowers, health and human rights, hazards, carbon cycle and regenerating places. Skills and knowledge developed in Geography lessons can be invaluable in the work place.

Assessed via coursework and examinations (Edexcel).

Entry requirements: 5 GCSEs at grade 5 or above, which must include GCSE Geography (cases considered where Geography has not been taken).



More information:

<https://www.settlecollege.org.uk/home/curriculum-2/departments/geography/>



## History (A-level)

The opportunity to study the experiences of two European countries of the development of the political ideas of nationalism, dictatorship and democracy in the twentieth century, as well as the history of protest, agitation and parliamentary reform in Britain from c1780–1928.

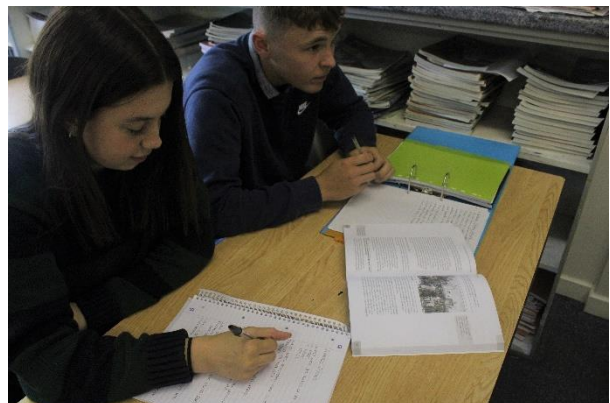
Assessed via coursework and examinations (Edexcel).

Entry requirements: 5 GCSEs at grade 5 or above, which must include GCSE History.



More information:

<https://www.settlecollege.org.uk/home/curriculum-2/departments/history/>



## **French (A-level)**

Develop the four language skills of Speaking, Listening, Reading and Writing and, in addition, study French culture and current affairs topics. Students will learn from newspapers, magazines, television and radio programmes and DVDs. Topics will include media, popular culture and current affairs.

Assessed via examinations (AQA)

Entry requirements: 5 GCSEs at grade 5 or above, including GCSE French above grade 6.



More information:

<https://www.settlecollege.org.uk/home/curriculum-2/departments/mfl/>



## **Spanish (A-level)**

Develop language skills and current affairs knowledge and in addition study aspects of the multicultural society, contemporary social issues, politics and culture. Topics also include media, popular culture and relationship issues.

Assessed via examinations (AQA).

Entry requirements: 5 GCSEs at grade 5 or above.



More information:

<https://www.settlecollege.org.uk/home/curriculum-2/departments/mfl/>





## Sport & Physical Activity (CTEC)

Sport and Physical Activity qualification to help students to achieve their potential and progress to the next stage of their lives, whether that's higher education, an apprenticeship or employment. Studying body systems, sports organisations, coaching and more.

Assessed via coursework and examinations (OCR).

Entry requirements: Grade 5 or above at GCSE PE or level 2 Merit in CNAT Sport.



More information:

<https://www.settlecollege.org.uk/home/curriculum-2/departments/pe/>

## Product Design

Studying a wide variety of aspects relating to the design of products, including developing and sustaining innovation, using CAD/CAM and looking at the influences of the processes and products of design and technological activity, from a historical perspective, and in current practice.

Assessed via coursework and examination (Edexcel).

Entry requirements: 5 GCSEs at grade 5 or above, which must include: GCSE Design & Technology Grade 5 or Art and Design Grade 6 or Engineering level 2 Merit or above.



More information:

<https://www.settlecollege.org.uk/home/curriculum-2/departments/design-and-technology/>

## Getting Involved

As key members of the Settle College and wider community and in their position as role models, we encourage all students to get involved in a broad array of activities. The aim of these activities is to help our students develop and prepare for the world of work and further study.

There are a variety of leadership opportunities available throughout school, beginning with the Sixth Form Leadership Team, where students can apply for positions leading a variety of activities both in and outside of Settle College, such as *Events Manager*, *Sports Representative* and *Head of Prefects*, as well as the prestigious *Senior Leader* roles.

Sixth Form students also assist in editing, writing and producing photography for the school magazine, *Settle Matters*. Some of our students work with younger Settle College students on their reading and there are a variety of events organised by our Sixth Form students throughout the year to raise money for their chosen charities.

The physical and mental wellbeing of our students is extremely important and alongside the sports offering, some of which is led by Sixth Form, we have an active Wellbeing Champions group, led by Sixth Form students.

Settle College has a broad and varied offering of clubs and societies and increasingly these are led by Sixth Form students, along with the various events organised by Sixth Form. In the past year Sixth Form students have led a sponsored walk across the Yorkshire Three Peaks, themed discos and, of course, the Sixth Form balls.

Students are encouraged and helped in pursuing opportunities beyond Settle College and we facilitate them in using non-contact time to do this. We have had students assist in local primary schools, contributing their time with local charities and working in the library.

You can follow some of our exploits on the Settle College Sixth Form Instagram page.



## Application

Name: \_\_\_\_\_ Current school: \_\_\_\_\_

Parent/Carer names: \_\_\_\_\_

Address: \_\_\_\_\_

\_\_\_\_\_

Contact number: \_\_\_\_\_ Contact email: \_\_\_\_\_

Please indicate which courses you would like to apply for. We hope to be able to accommodate the vast majority of student choices within timetable limitations. Please note that these choices are not final and we endeavour to accommodate changes where necessary.

<b>Choose 3 subjects.</b> You may add a 4 <sup>th</sup> following discussion with the Sixth Form team. Please include reserve subjects.	<b>Staff signature</b> (ask the relevant subject teacher to sign/comment below to indicate your suitability for this course)
1.	
2.	
3.	
1 <sup>st</sup> reserve	
2 <sup>nd</sup> reserve	

Signature of student: \_\_\_\_\_ Date: \_\_\_\_\_

Signature of parent/carer: \_\_\_\_\_ Date: \_\_\_\_\_

**Please return application forms by Wednesday 18<sup>th</sup> December 2024 to  
Mr Bayram, Head of Sixth Form, Settle College, Settle BD24 0AU**



Settle College, Settle, North Yorkshire BD24 0AU

**Telephone:** 01729 822451

**Email:** [admin@settlecollege.n-yorks.sch.uk](mailto:admin@settlecollege.n-yorks.sch.uk)

**Twitter/X:** @SettleCollege

**Instagram:** @settlecollegesixthform